

Fulfilling The Olmsted Vision:
Connecting
the South Mountain Reservation
to
the East Coast Greenway

RAHWAY RIVER WATERSHED ASSOCIATION

Laura Pangallozzi, Maplewood
Bob McIntosh, Springfield
Vic Benes, Millburn
Marian Glenn, Seton Hall University

The Olmsted vision: Essex and Union County park systems*

- Olmsted and Vaux, while designing and supervising the installation of Central Park, visit Newark in 1867
- Draw up a plan for a park in central Newark that included
 - a park along the now defunct Morris Canal
 - and parkways, similar to those along Commonwealth Avenue in Boston, connecting the waterway park to the surrounding neighborhoods, never built
- The Olmsted plan becomes Branch Brook Park along the canal, eventually listed on the National Register of Historic Places

*We are indebted to Kathleen Galop, Esq., for insight into the history of the Union and Essex parks systems.

The Olmsted vision: Essex and Union County park systems

- Branch Brook Park typical of the way parks develop in Essex and Union counties
 - After substantial settlement already underway
 - Often a long time after original plans made: Branch Brook finished more than 50 years after Olmsted visit
 - Along waterways because of rights of public access to waterways under common law
- Essex and Union County park systems develop under the guidance of the Olmsted Brothers firm, run by Olmsted's heirs
 - Firm hired to develop Essex County park system in 1898 and the Union County system in the 1920s
 - Firm continues supervising development of the Union County parks into the 1940s and the Essex County parks until the 1950s
- Linking the Essex and Union County parks systems proposed by the Olmsted Brothers in 1921, running along the bed of the Elizabeth River and then the Rahway River

What is the East Coast Greenway?

- Its recent installation along parts of the Rahway River revives the early 20th century idea of linking the Essex and Union County park systems
- A city to city trail network running from Key West to Canada that spans 15 states
- Accommodates pedestrians, wheelchair users, cyclists, skaters, skiers, and equestrians
- The [East Coast Greenway Alliance](#) (ECGA) describes the greenway as the “urban version of the legendary Appalachian Trail”
- Partly completed: As of 2013, 29% of the route is off-road; ECGA’s goal is 100%



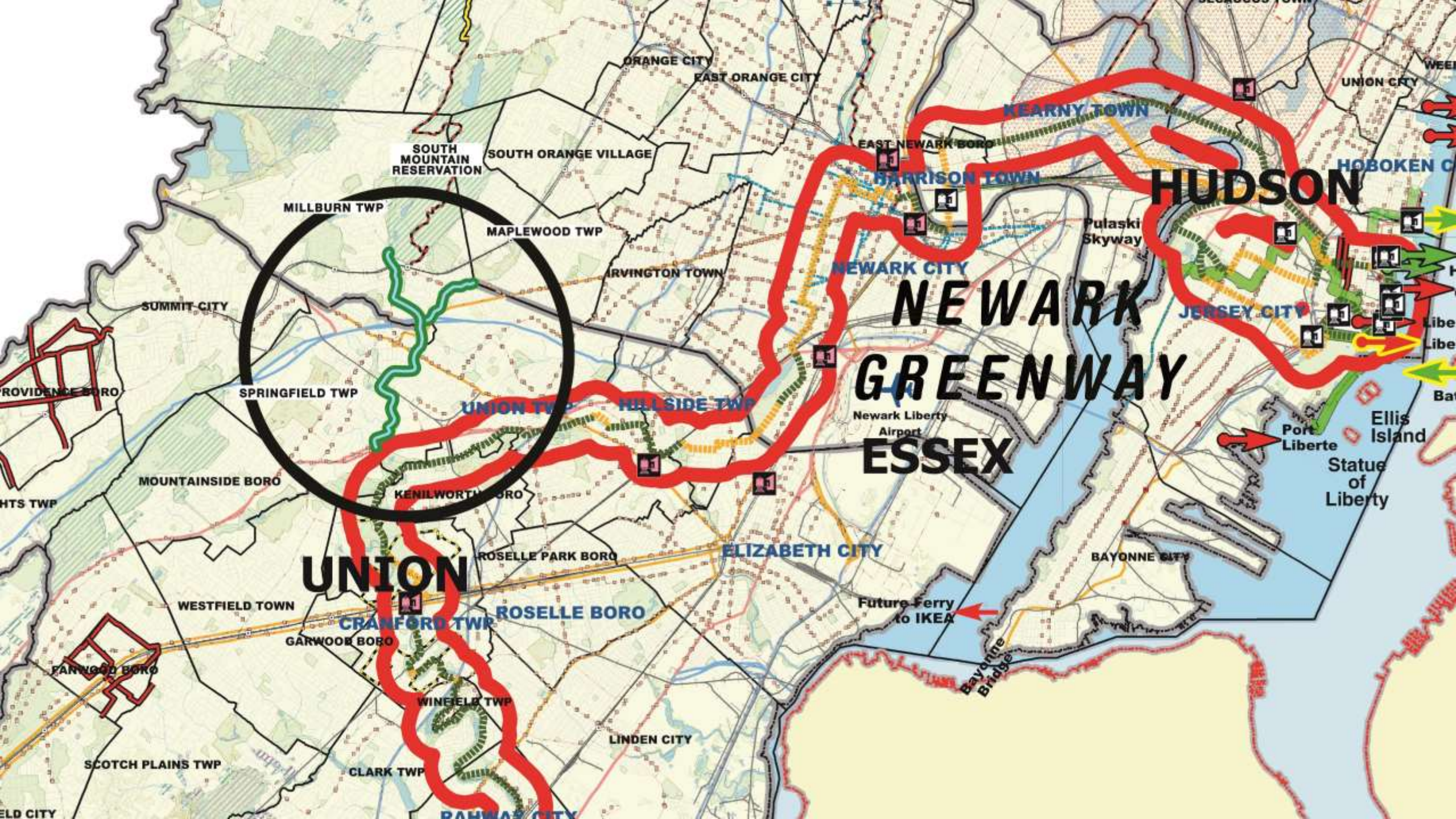
East Coast Greenway New Jersey

Trenton to NYC - 90 Miles

Location of
South
Mountain
Reservation



- NJ ahead of national average in % of greenway that is off-road, more than 50% as of 2013
- Includes the 35-mile D&R Canal State Park that runs from Trenton to New Brunswick
- The ECG in NJ tends to follow rivers
- Our proposal extends this tendency



NEWARK GREENWAY

UNION

ESSEX

HUDSON



Future Ferry to IKEA

Bayonne Bridge

Port Liberte

Ellis Island
Statue of Liberty

BAYONNE CITY

ELIZABETH CITY

ROSELLE BORO

CRANFORD TWP

GARWOOD BORO

WINFIELD TWP

LINDEN CITY

CLARK TWP

RAHWAY CITY

SCOTCH PLAINS TWP

PATERSON CITY

WESTFIELD TOWN

ROSELLE PARK BORO

KENILWORTH BORO

MOUNTAINSIDE BORO

SPRINGFIELD TWP

UNION TWP

HILLSIDE TWP

SUMMIT CITY

MAPLEWOOD TWP

IRVINGTON TOWN

SOUTH MOUNTAIN RESERVATION

SOUTH ORANGE VILLAGE

ORANGE CITY

EAST ORANGE CITY

EAST NEWARK BORO

HARRISON TOWN

KEARNY TOWN

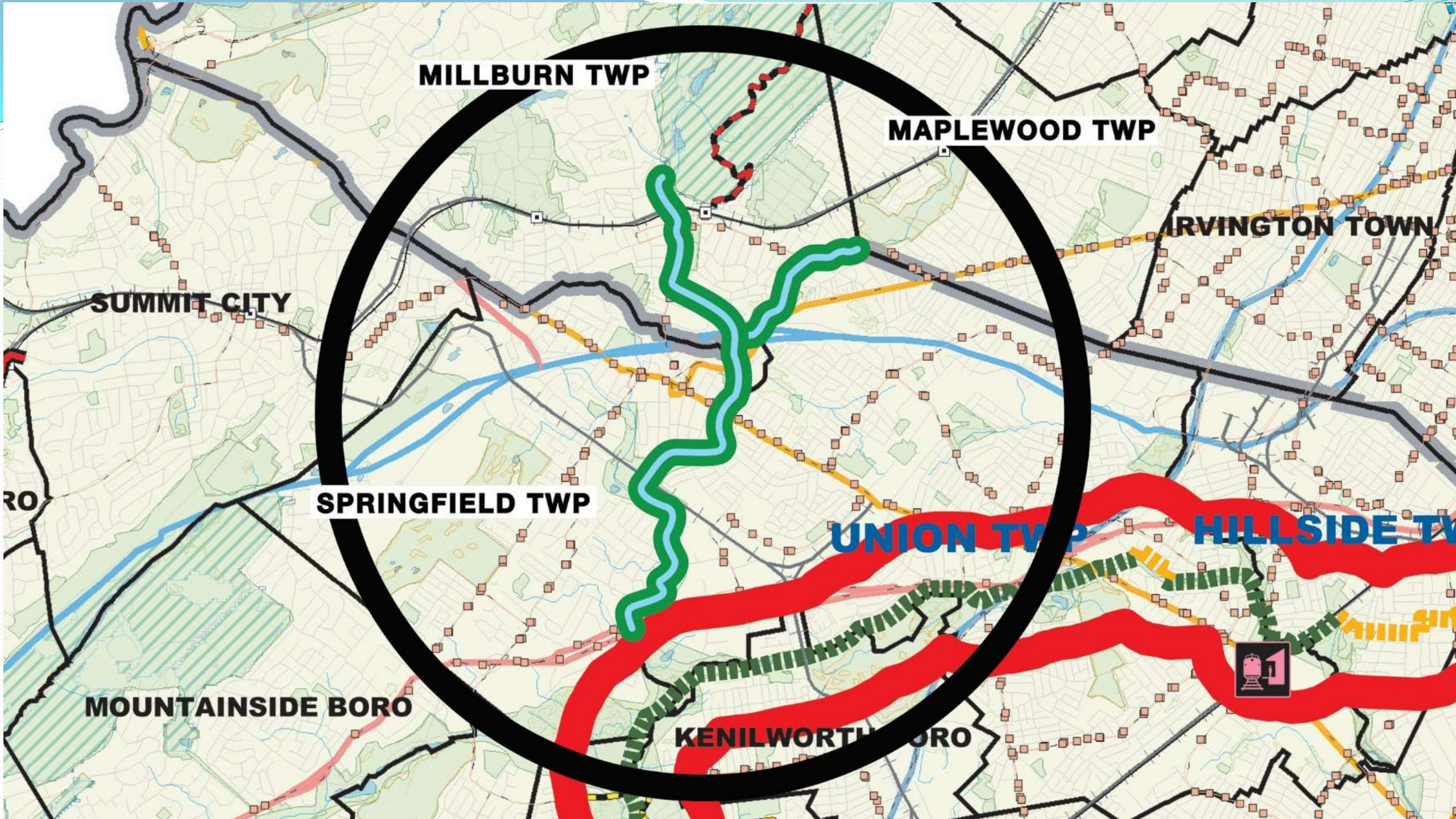
UNION CITY

HOBOKEN CITY

JERSEY CITY

Pulaski Skyway

Newark Liberty Airport



MILLBURN TWP

MAPLEWOOD TWP

IRVINGTON TOWN

SUMMIT CITY

SPRINGFIELD TWP

UNION TWP

HILLSIDE TWP

MOUNTAINSIDE BORO

KENILWORTH BORO



East Coast Greenway

South Mountain Reservation



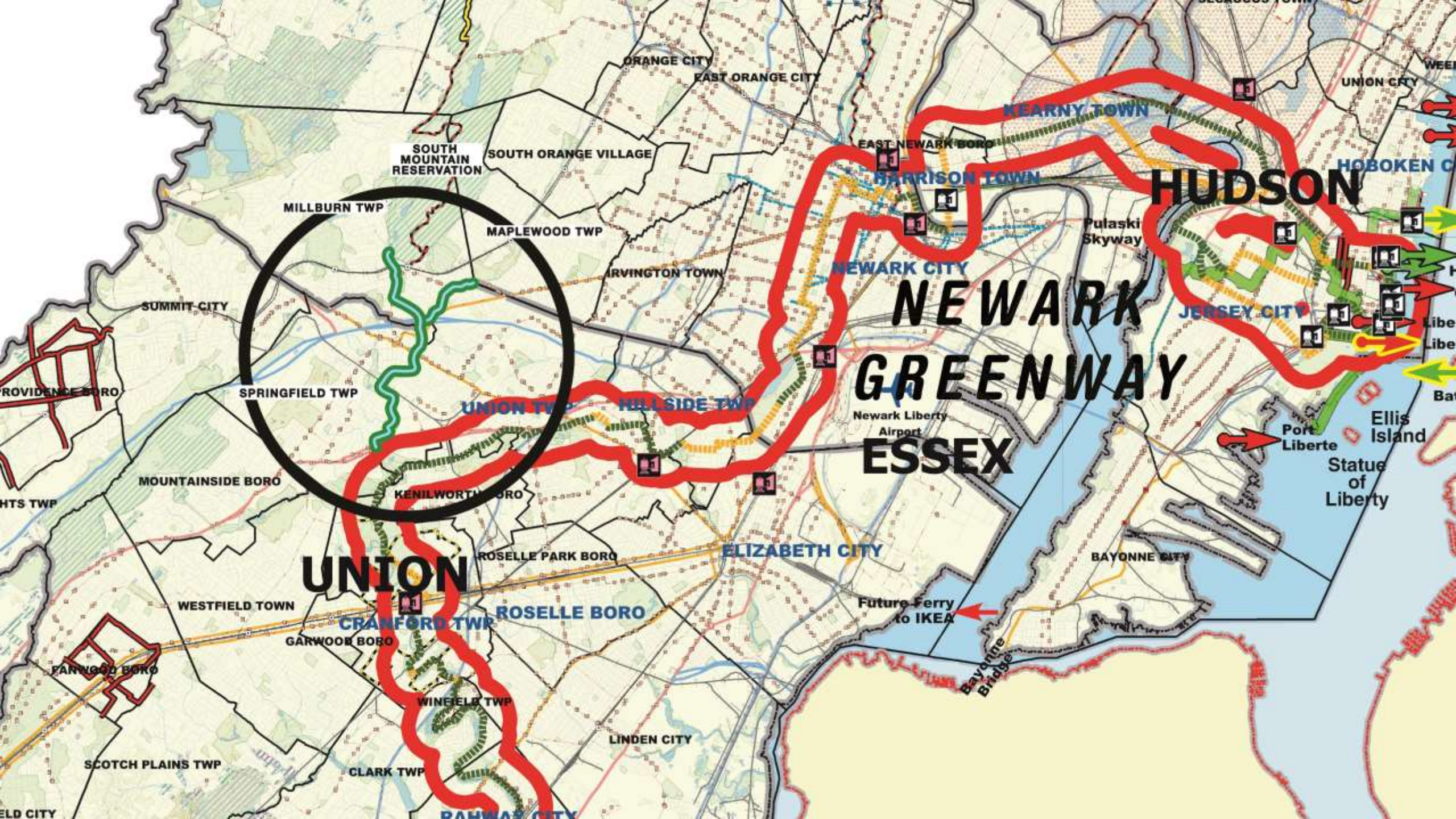
- Trail Complete
- Trail in Development
- Trail Route in Public Control
- Trail Route Identified
- Gap Area (trail route sought)

How does the Rahway River Watershed Association propose to link the South Mountain Reservation and the East Coast Greenway?

- By creating and/or linking linear parks along the Rahway River and tributaries to the river
- Route through
 - Springfield
 - Union
 - Millburn
 - Maplewood
- Description of these routes in following parts of our presentation

The East Coast Greenway and environs on the Rahway River in Union County Parks: An introduction to and inspiration for modern riparian greenways

Nomahegan Park
Cranford, New Jersey
Lenape Park
Springfield, New Jersey



NEWARK GREENWAY

UNION

ESSEX

HUDSON



Future Ferry to IKEA

Bayonne Bridge

Statue of Liberty
Ellis Island
Port Liberte

Pulaski Skyway

SUMMIT CITY

SPRINGFIELD TWP

MAPLEWOOD TWP

IRVINGTON TOWN

ORANGE CITY

EAST ORANGE CITY

EAST NEWARK BORO

KEARNY TOWN

HARRISON TOWN

NEWARK CITY

JERSEY CITY

MOUNTAINSIDE BORO

KENILWORTH BORO

UNION TWP

HILLSIDE TWP

ROSELLE PARK BORO

ELIZABETH CITY

BAYONNE CITY

WESTFIELD TOWN

CRANFORD TWP

ROSELLE BORO

GARWOOD BORO

WINFIELD TWP

LINDEN CITY

SCOTCH PLAINS TWP

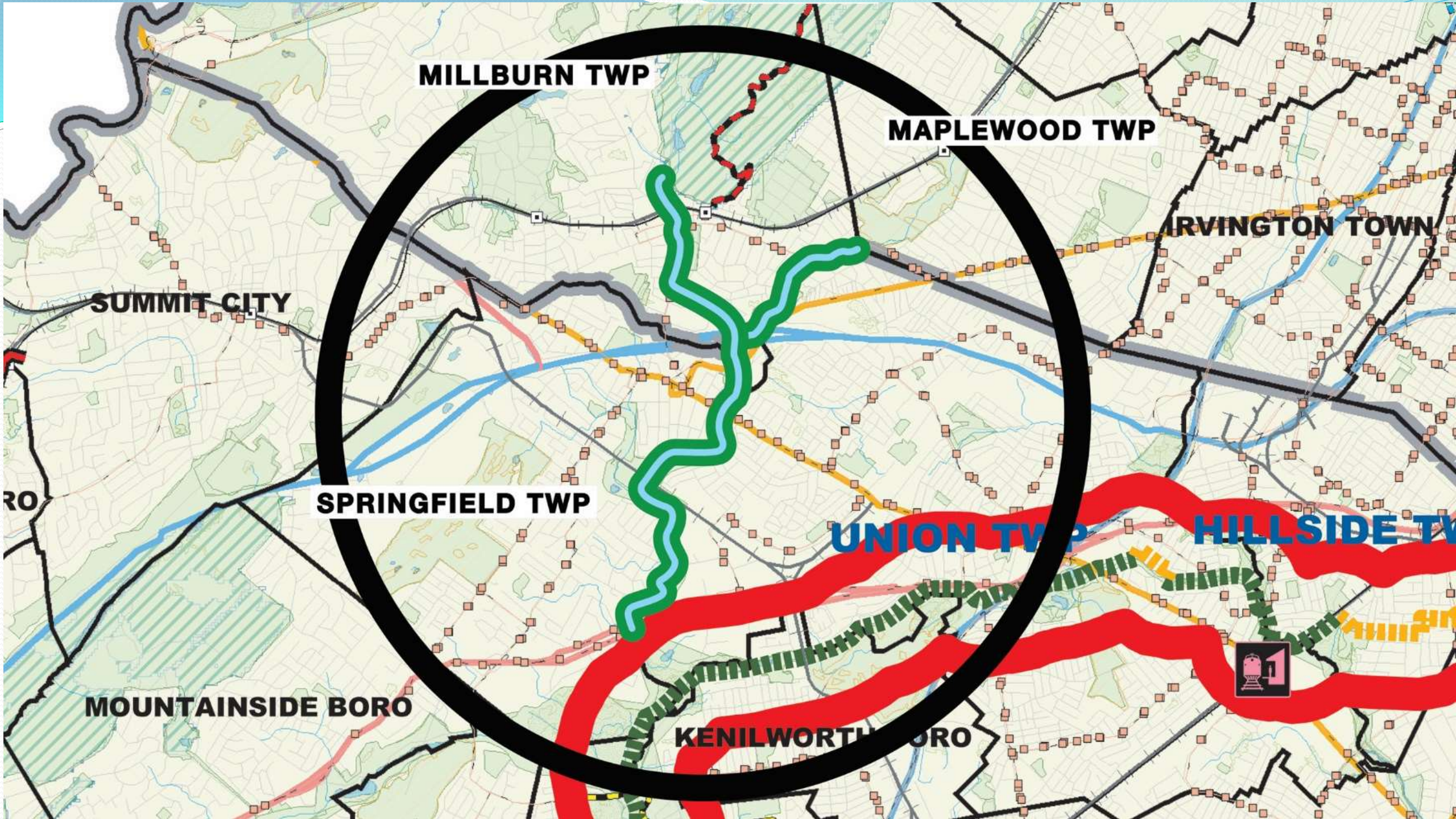
CLARK TWP

RAHWAY CITY

Statue of Liberty
Ellis Island
Port Liberte

Libe
libe

Bat



MILLBURN TWP

MAPLEWOOD TWP

IRVINGTON TOWN

SUMMIT CITY

SPRINGFIELD TWP

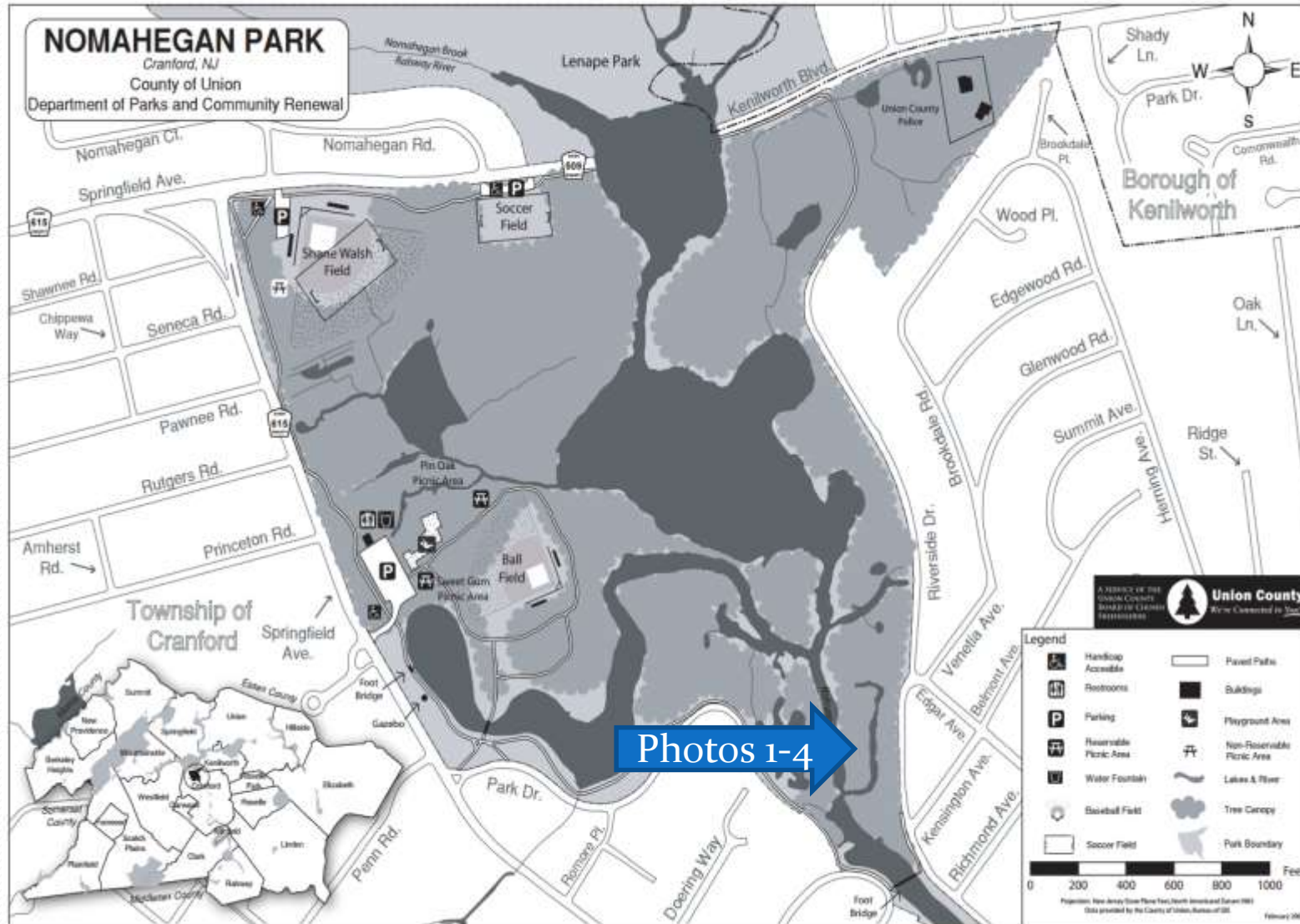
UNION TWP

HILLSIDE TWP

MOUNTAINSIDE BORO

KENILWORTH BORO

The East Coast Greenway In Nomahegan Park



East Coast Greenway trail marker in Nomahegan Park



Photo 1

Rahway River facing upstream from the Nomahegan Park bridge



Photo

2

The Nomahegan Park bridge with riverside residential development beside the park



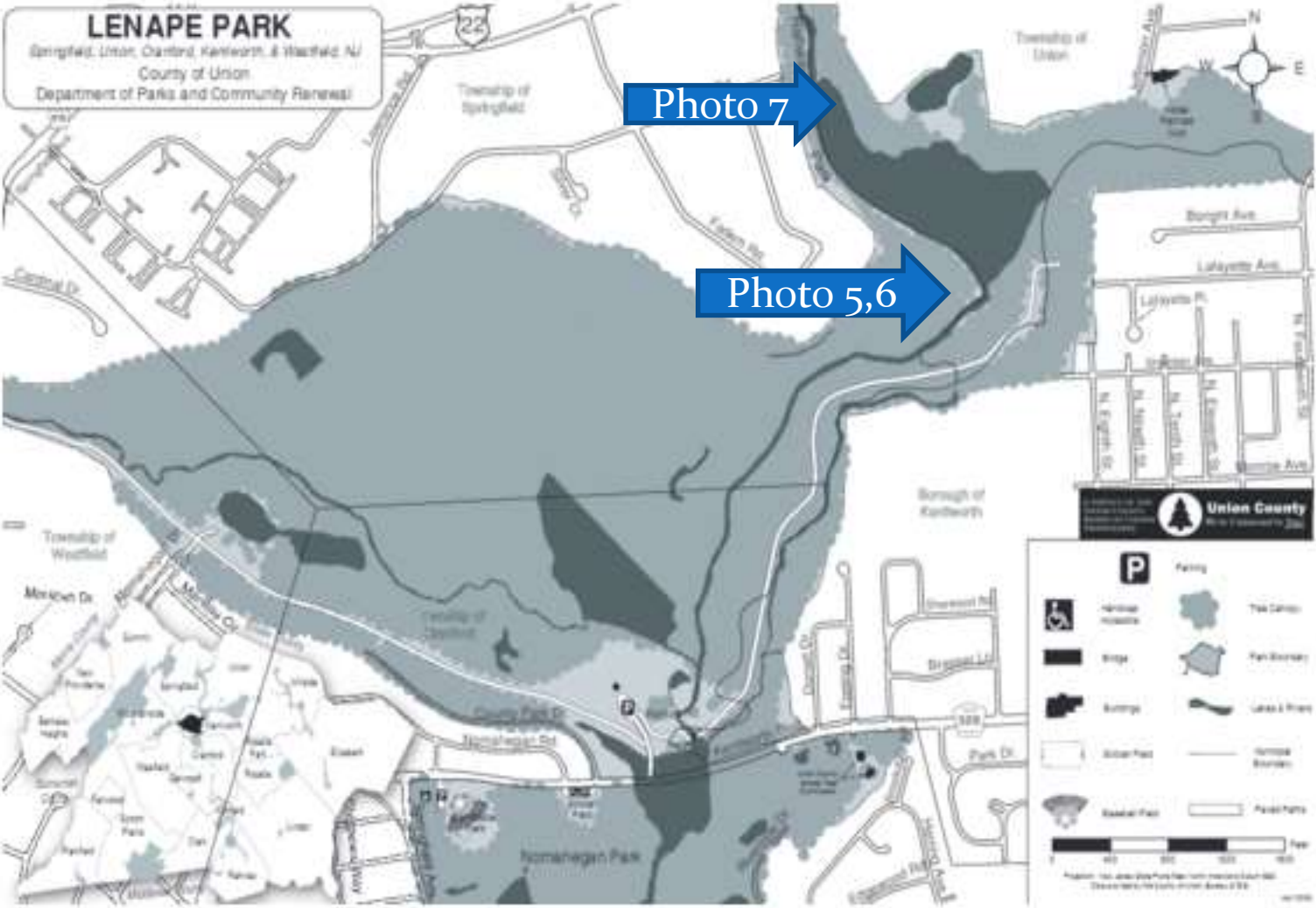
Photo 3

Recent modifications to riverside homes after Storm Irene flooding



Photo 4

Lenape Park: Flood control + recreation



Lenape Park from Fadem Road



Photo 5

The pump on Fadem Road in action



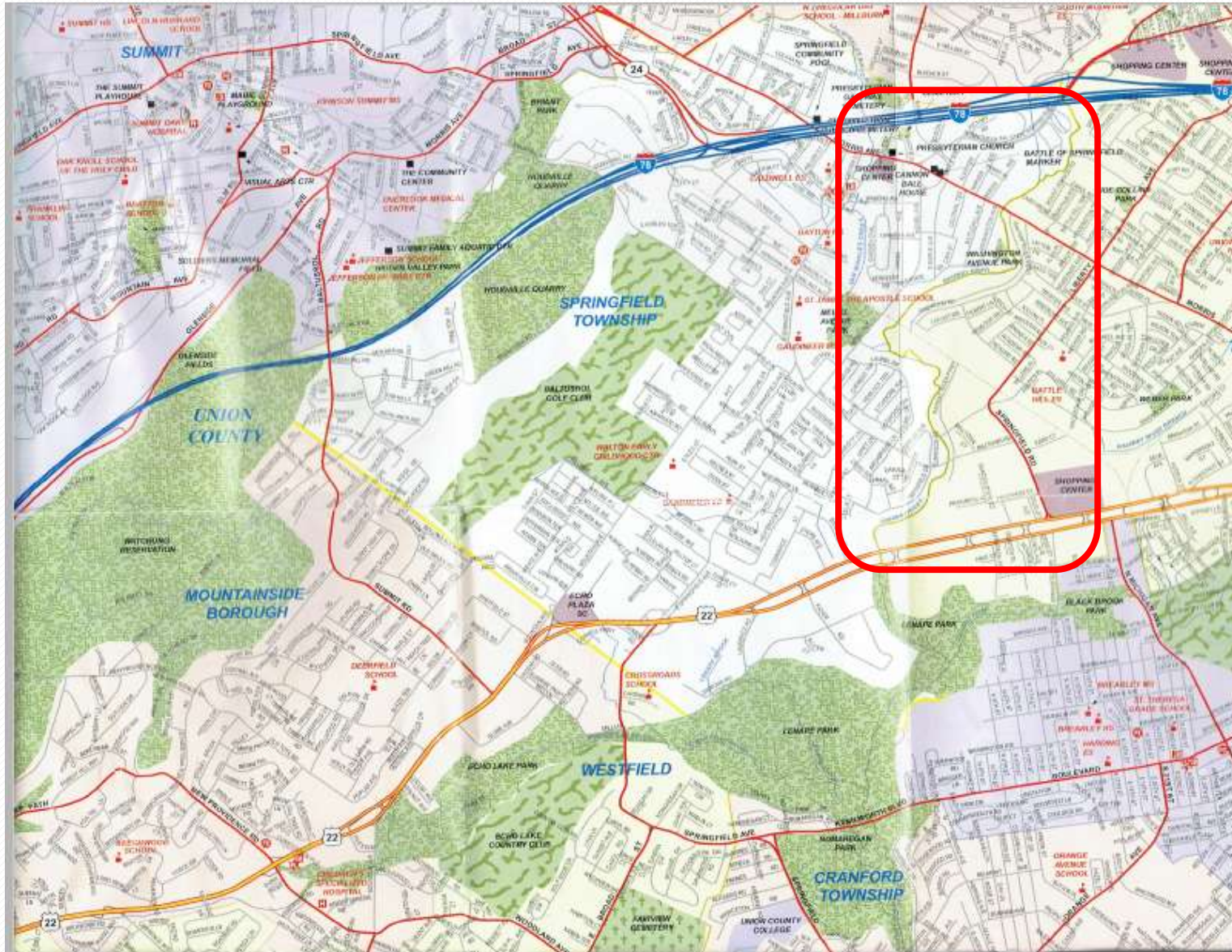
Photo 6

New construction on the west side of the Rahway River



Photo 7

The Springfield/Union study area



A challenge: The US Route 22 Crossing



Highway barrier



Photo 8

Route 22 view facing downstream



Photo 9

Small playground on Smithfield Road



Photo 10

The river downstream of the Milltown Road bridge



Photo 11

The middle river in Springfield: Potentially easy going



Another municipal park along the route



Photo 12

The Meisel Park Area-1



Photo 13

The Meisel Park Area-2



Photo 14

Meisel Park Area-3



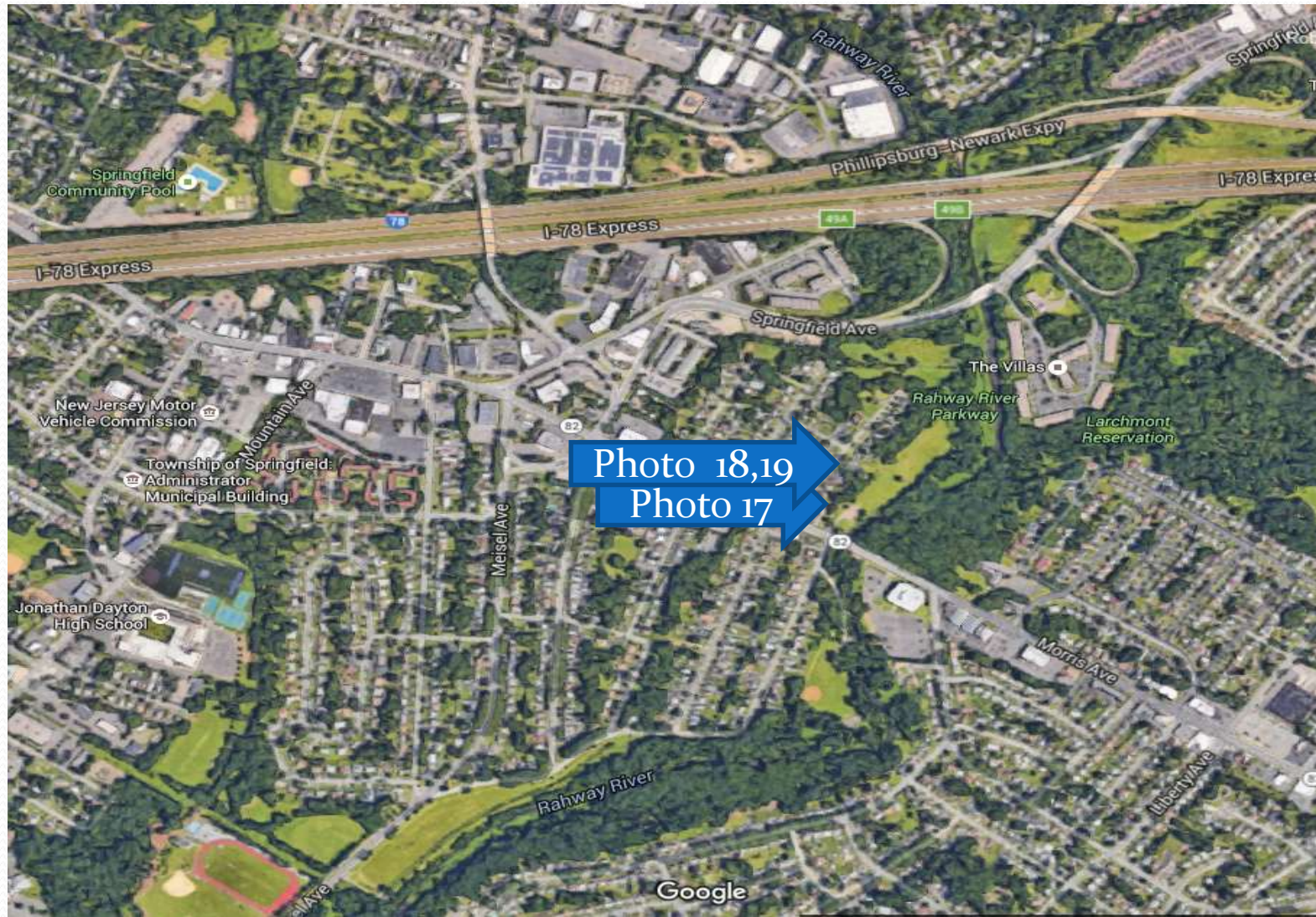
Photo 15

Meisel Park Area-4



Photo 16

To Interstate 78 and a major barrier



Rahway River Parkway: A continuing historical theme



Photo 17

Morris Avenue-1



Photo 18

Morris Avenue-2



Photo 19

Limited access to the main stem, But a tributary is an alternative



Larchmont Park access to the river



Photo 20

Carol Park



Photo 21

Springfield Avenue and Interstate Route 78: The last barrier to the trailway in the Springfield/Union study area



Photo 22

Detail of the Springfield Avenue overpass



Summary

- The presentation provides an exploratory narrative of the feasibility for a riparian greenway along the Springfield /Union section of the Rahway River.
- The initial conclusion is favorable due largely to the inheritance from the Olmstead vision of connecting the Essex and Union County Parks.

NJ Land Conservation 2016 RALLY

Greenways through THE URBAN JUNGLE

PROBLEM: Connect the South Mountain Reservation to the Rahway River “Parkway” at the confluence of the E & W branches



IS A WEST BRANCH GREENWAY FEASIBLE?

IS IT A GOOD IDEA?

HOW DO WE GO ABOUT IT?

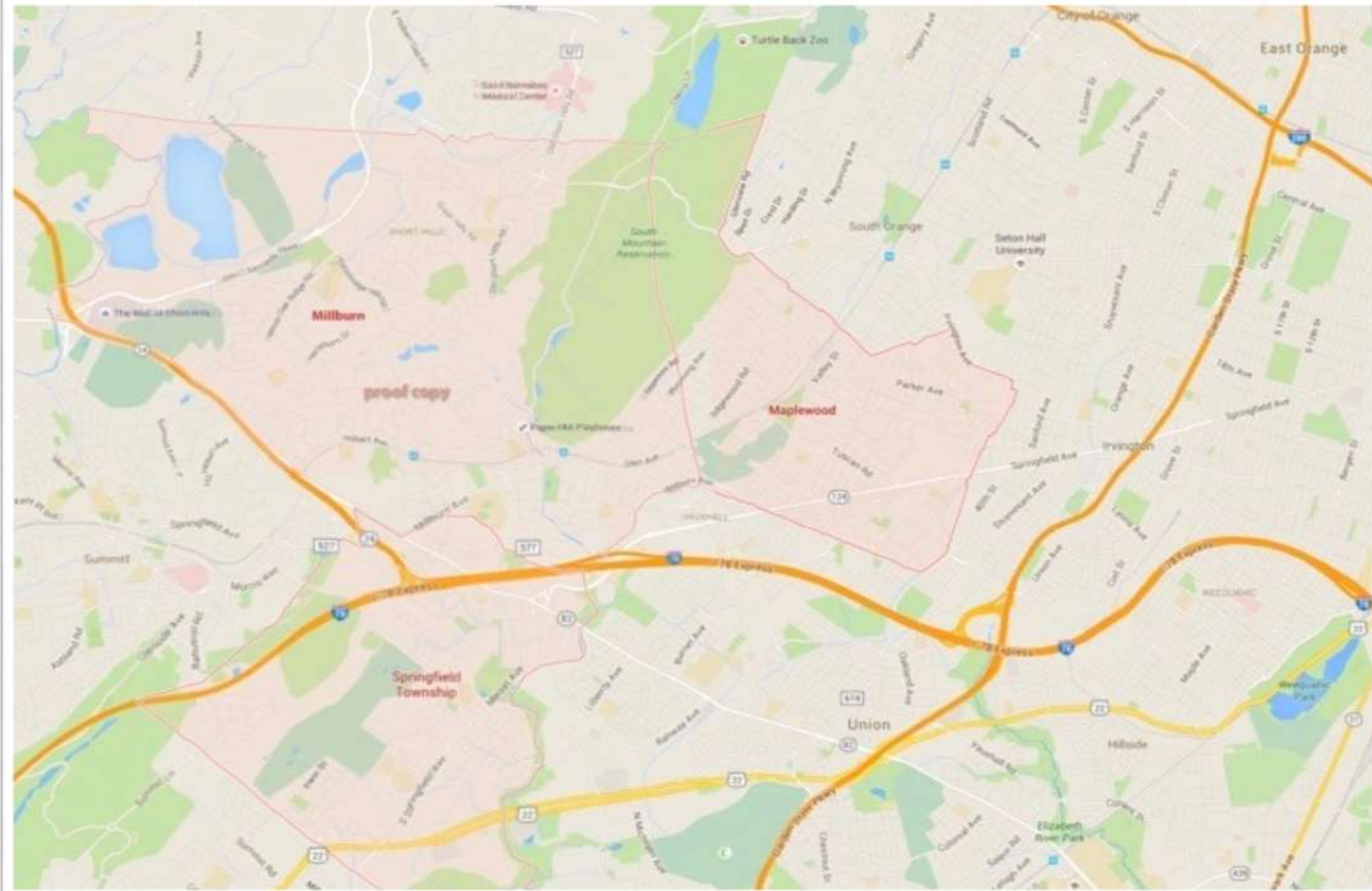
WHAT ARE THE MAIN OBSTACLES?

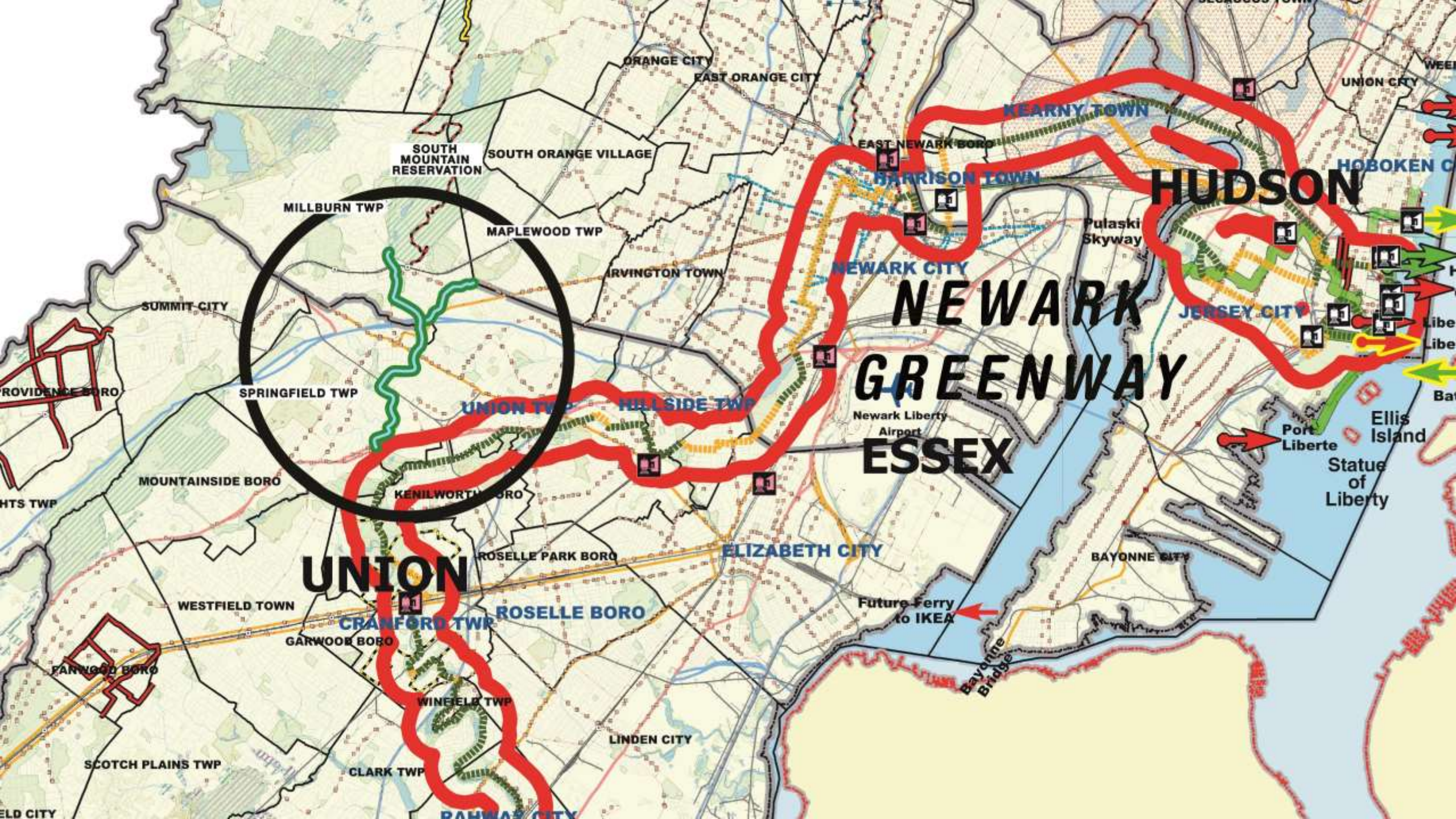
BASIC TASKS

- GETTING PUBLIC SUPPORT
- ORGANIZING GREENWAY RIPARIAN BUFFERS
- NEGOTIATING SALES AND EASEMENTS
- ROUTING A TRAIL PAST DEVELOPED AREAS
- CLEARING THE ROUTE
- MAPPING THE WAY

Some of the complex issues

- JURISDICTIONS: STATE, COUNTY, TOWNSHIP
- LEGAL QUESTIONS
- PUBLIC OR PRIVATE GOOD?
- MULTIPLICITY OF STAKEHOLDERS
- ROLES OF NJDEP AND USACE
- COOPERATION OF LOCAL GOVERNMENTS
- DOWNTOWN REDEVELOPMENT





NEWARK GREENWAY



Future Ferry to IKEA

Bayonne Bridge

Port Liberte

Ellis Island
Statue of Liberty

HUDSON

ESSEX

UNION

ROSELLE BORO

ELIZABETH CITY

NEWARK CITY

JERSEY CITY

KEARNY TOWN

HARRISON TOWN

HOBOKEN CITY

SOUTH MOUNTAIN RESERVATION

SOUTH ORANGE VILLAGE

ORANGE CITY

EAST ORANGE CITY

MILLBURN TWP

MAPLEWOOD TWP

IRVINGTON TOWN

SUMMIT CITY

SPRINGFIELD TWP

UNION TWP

HILLSIDE TWP

KENILWORTH BORO

ROSELLE PARK BORO

WESTFIELD TOWN

CRANFORD TWP

GARWOOD BORO

WINFIELD TWP

LINDEN CITY

CLARK TWP

RAHWAY CITY

SCOTCH PLAINS TWP

FANNING BORO

ELM CITY

HTS TWP

PROVIDENCE BORO

MOUNTAINSIDE BORO

Libe
libe

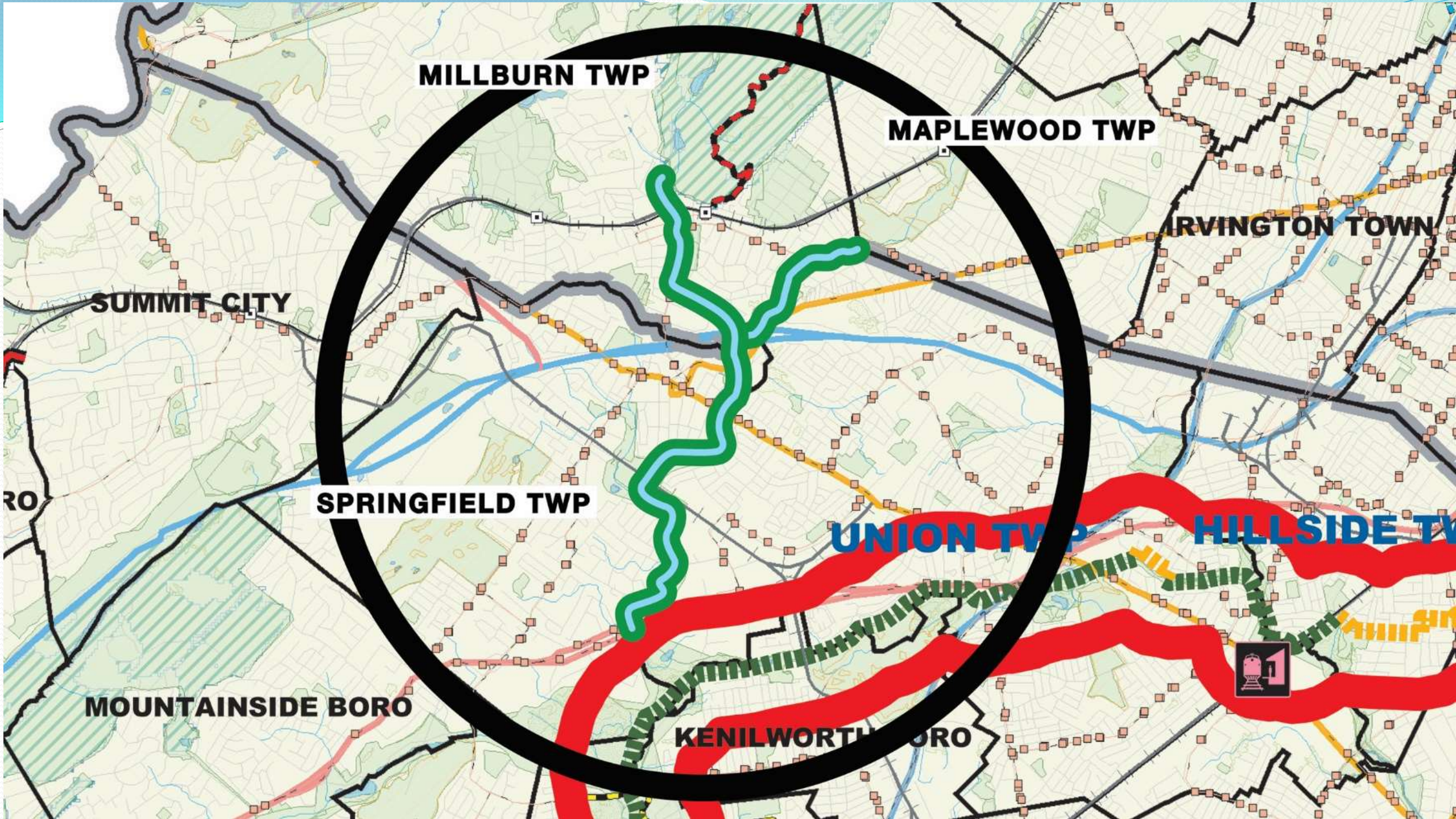
Bat

Pulaski Skyway

UNION CITY

WEE

SEABROOK TWP



MILLBURN TWP

MAPLEWOOD TWP

IRVINGTON TOWN

SUMMIT CITY

SPRINGFIELD TWP

UNION TWP

HILLSIDE TWP

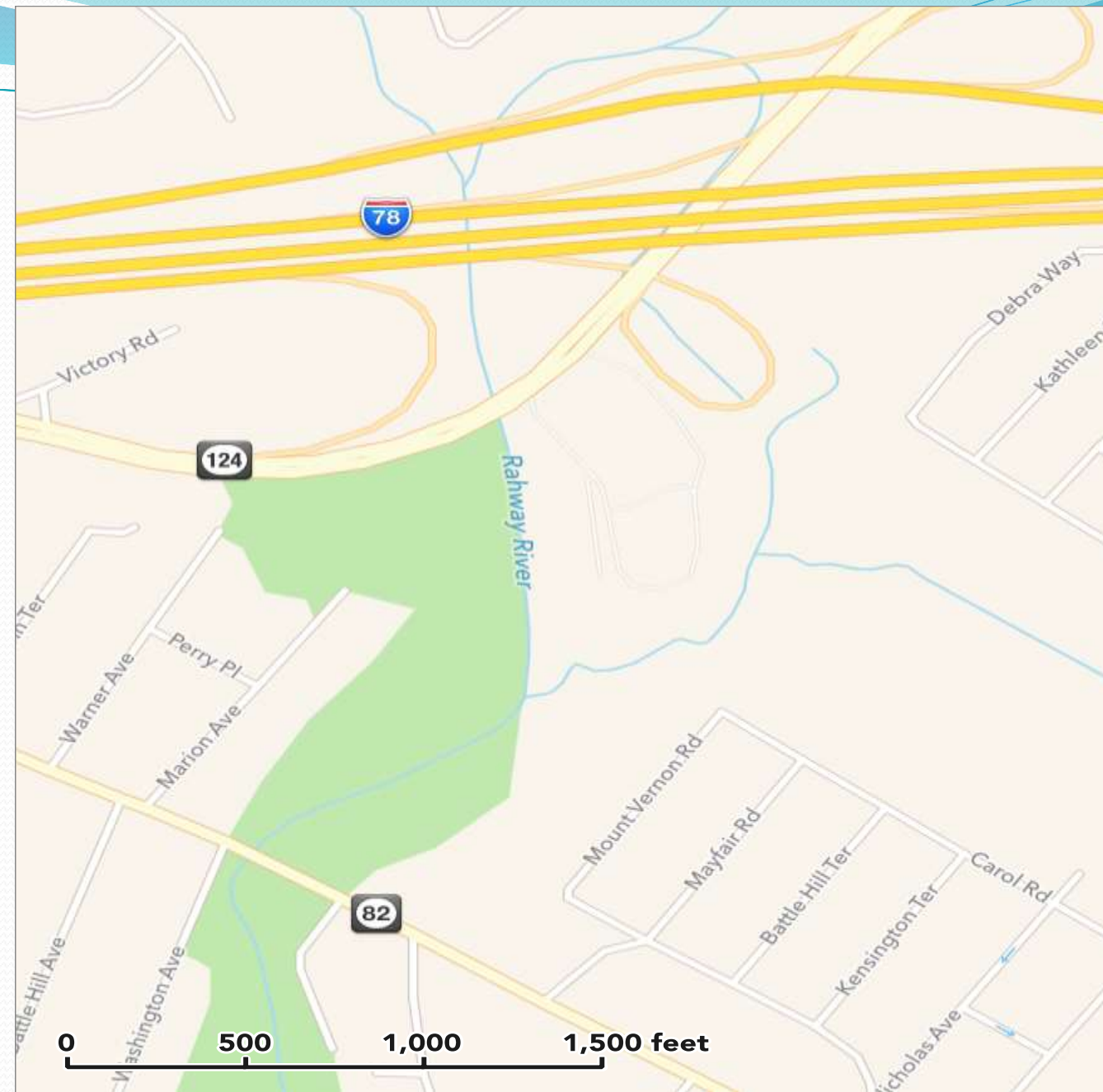
MOUNTAINSIDE BORO

KENILWORTH BORO



LEAD-UP TO THE CONFLUENCE FROM SOUTH-WEST

Green part is the
“Rahway River Parkway”



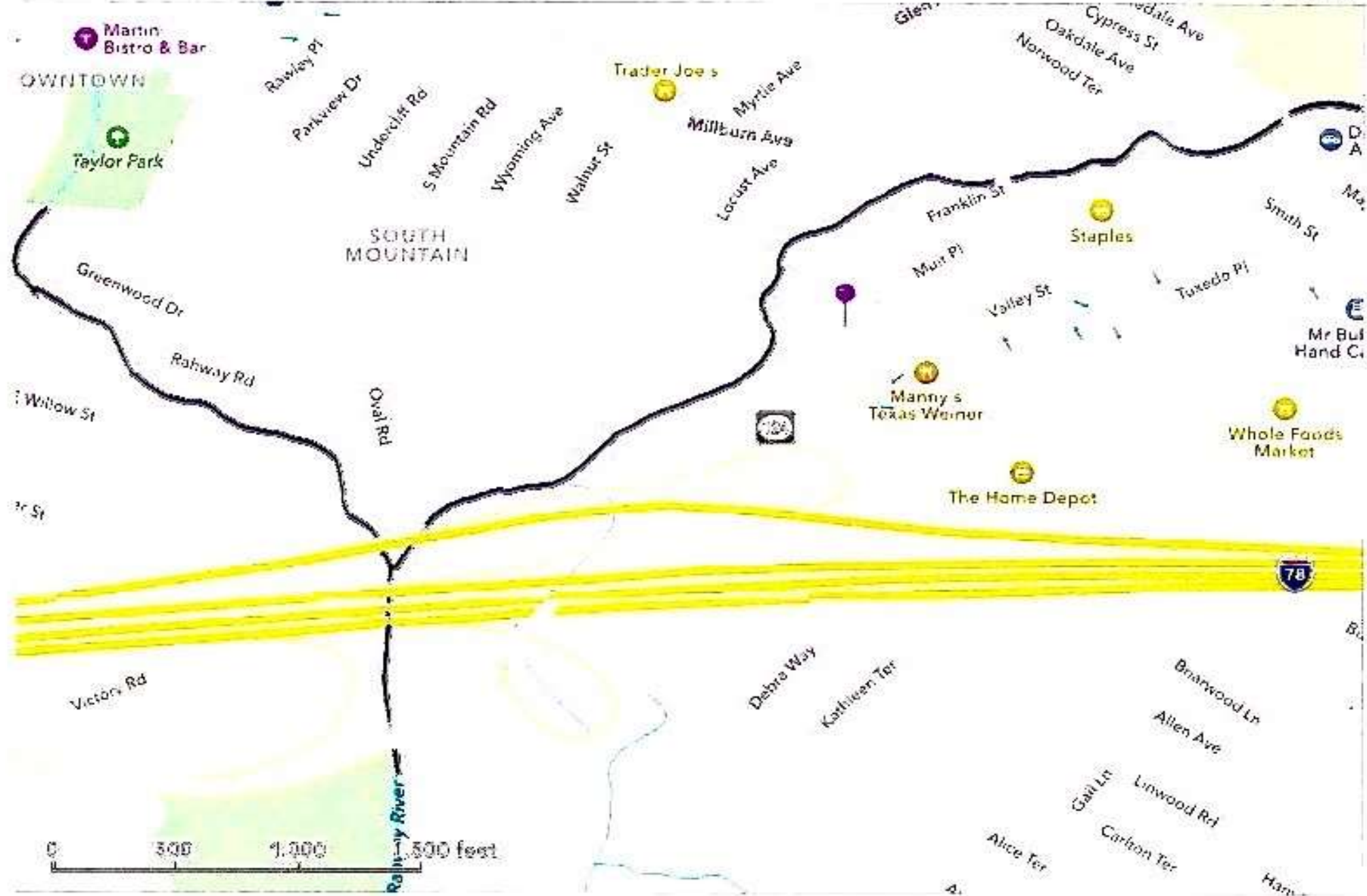


- THERE ARE TWO NATURAL ROUTES

1. UP THE WEST BRANCH VIA MILLBURN

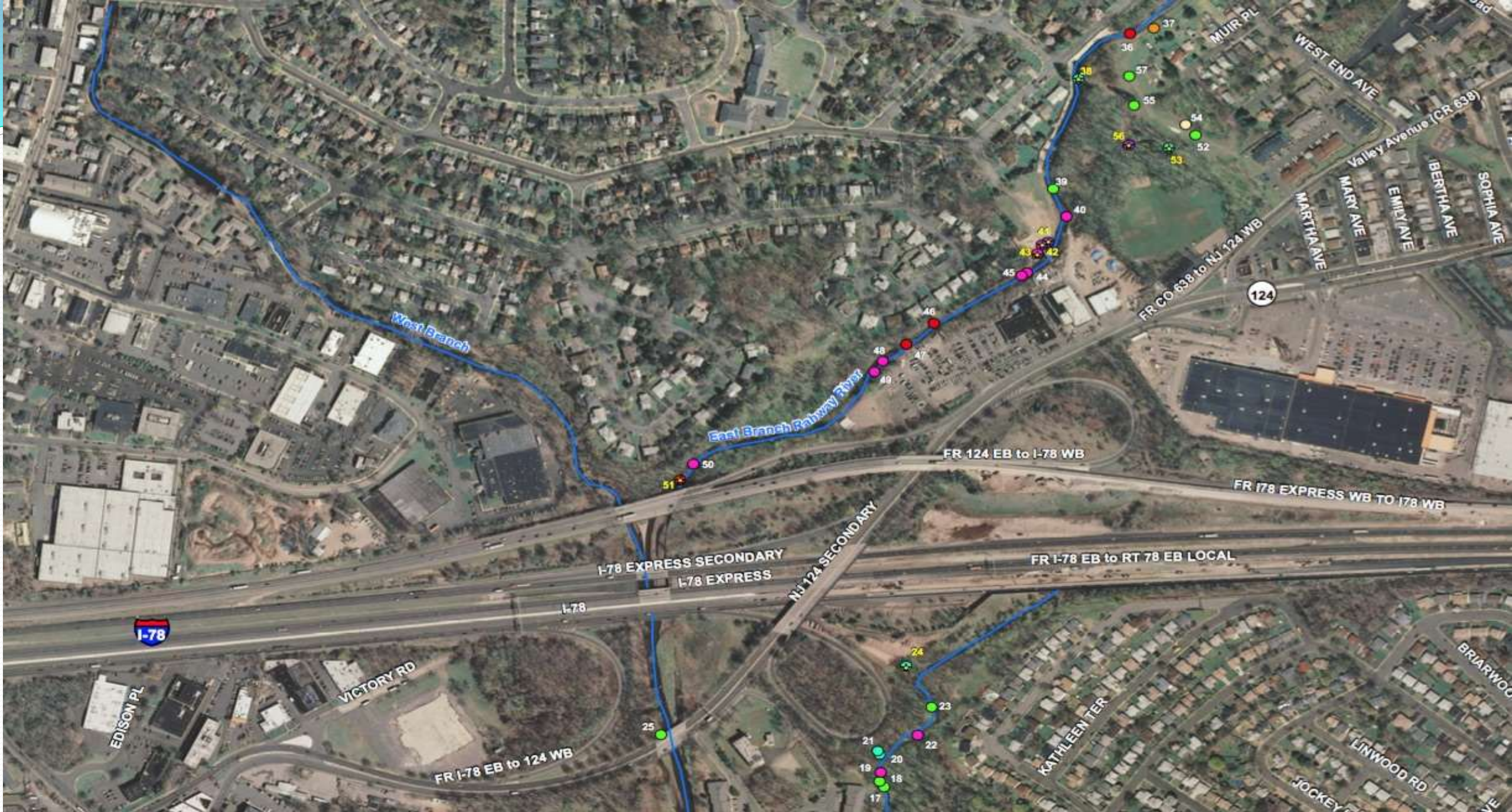
AND/OR

2. UP THE EAST BRANCH THROUGH
MAPLEWOOD



Note: Those denoted in yellow and marked with a yellow star are priority locations contributing to poor drainage and flooding





I-78

West Branch

East Branch Pathway River

I-78 EXPRESS SECONDARY
I-78 EXPRESS

NJ 124 SECONDARY

FR 124 EB to I-78 WB

124

FR I-78 EXPRESS WB TO I-78 WB

FR I-78 EB to RT 78 EB LOCAL

FR I-78 EB to 124 WB

KATHLEEN TER

JOCKEY

LINWOOD RD

BRIARWOOD

MARTH AVE

MARY AVE

EMERALD AVE

WEST END AVE

Valley Avenue (CR 638)

MUIR PL

SOPHIA AVE

BERTHA AVE

BRIARWOOD

West branch : I-78 confluence to Paper Mill Playhouse









**THERE IS
NOT
ALWAYS
SPACE.**

**EASEMENT
ANYONE?**











Old dam and
millpond at
Lakeside
Village
apartments





Possible
escape
spot
to avoid
development
at river's
edge
leads to
Taylor Park
several blocks
away.



- FROM HERE TWO ROUTES ARE POSSIBLE
 - A MAJOR EFFORT ALONG THE RIVER THROUGH DOWNTOWN MILLBURNOR
 - AN EASIER WAY REACHING TAYLOR PARK VIA STREETS, & THEN TWO SHORT BLOCKS E OF DOWNTOWN TO SOUTH MTN. RESERVATION



AFTER THE
LAKESIDE
VILLAGE
APTS. THE
RIVER
TURNS EAST
AND
GETTING
THROUGH
GETS HARD





RIDGEWOOD
AVENUE
BRIDGE,
TAYLOR PARK,
AND
SOUTH
MOUNTAIN
AHEAD







HOMES AND
BUSINESSES
NEAR THE
RIVER
IMPEDE
GREENWAY
PASSAGE TO
THE PARK

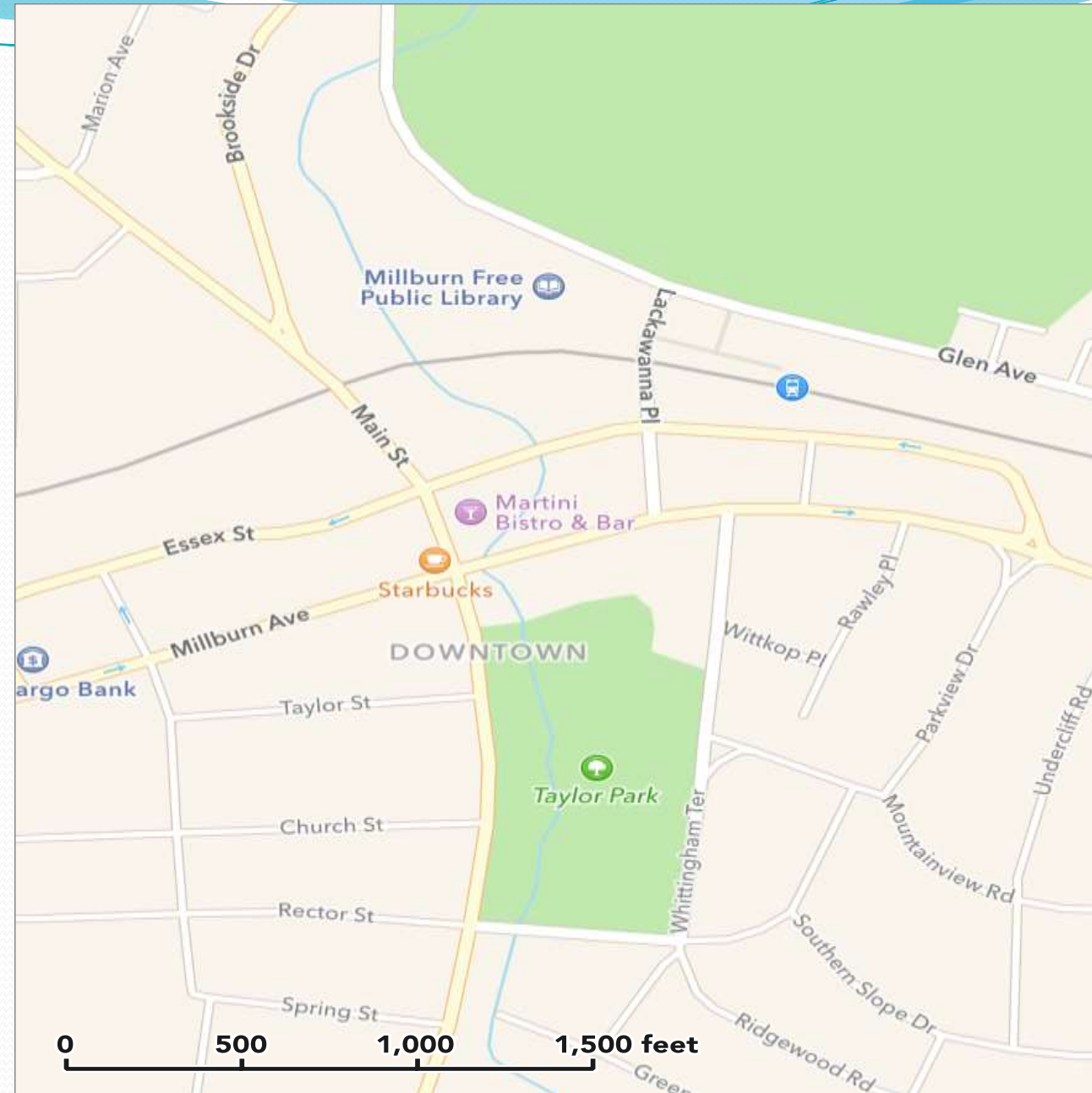
South
Mountain
Reservation
rises
at right

Millburn
downtown
ahead





**DOWNTOWN
MILLBURN issues:**
Flooding,
pedestrian safety,
Pedestrian space,
outdoor dining,
redevelopment, &
“river walk”



VIEW OF
MILLBURN
AVENUE
BRIDGE
FROM NEAR
THE RAIN
GARDEN
IN TAYLOR
PARK



Looking under
the notorious
“Futter’s Bridge”

The flow passage
is 33’ wide at
top, and 7’ high
in the middle





Start of the
s-curve in the
Millburn
“gorge”

View is
downstream

View upstream
to the
Essex Street
bridge.

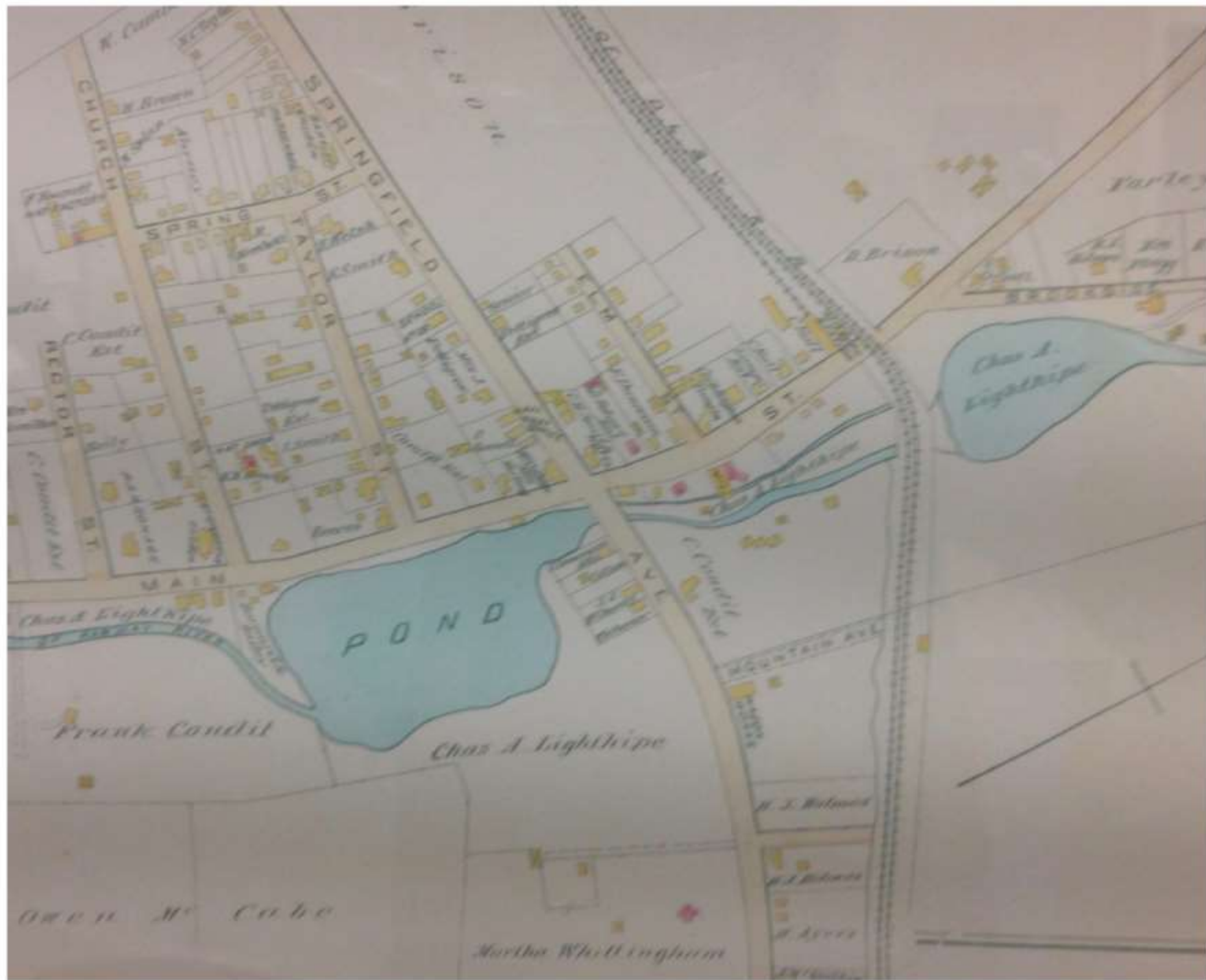
Together, the
choke points
in downtown
create a jump
of 15' In the
FEMA flood
profile





IMPOUNDED BY
THE CHOKE
POINTS
DOWNSTREAM,
THE CREST OF
IRENE'S FLOOD
WATERS FILLED
THIS TROUGH
AND INTO
BUSINESSES
DOWNTOWN

1895 map shows mill ponds and races where downtown Millburn has grown up





- SHALL MILBURN ADOPT A HOLISTIC DOWNTOWN REDEVELOPMENT PLAN TO ADDRESS ITS PROBLEMS, INCLUDING

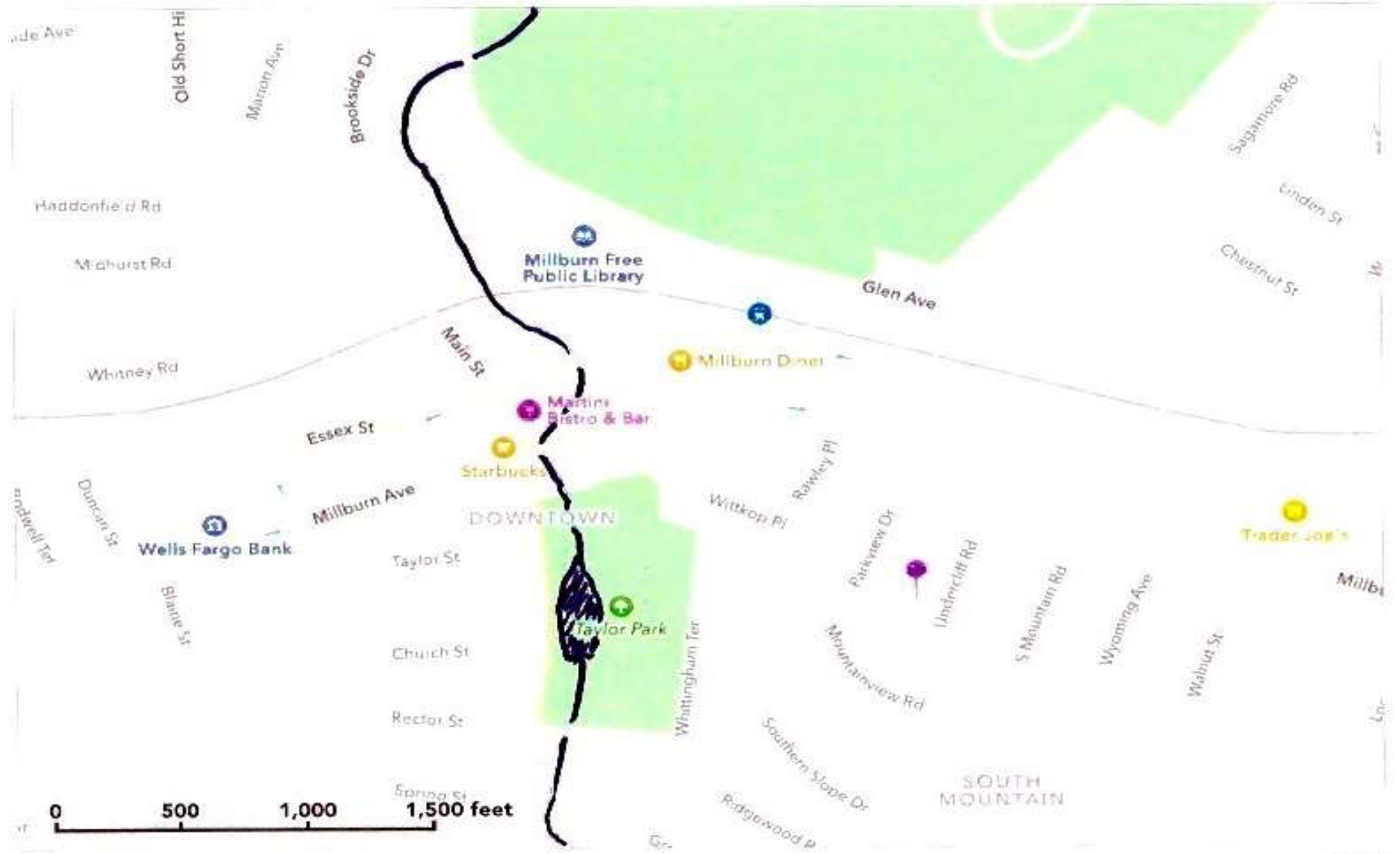
- BUYOUTS AND EMINENT DOMAIN, OR

- JUST PUTTER ALONG ON SPOT FIXES?



ON PAST THE
RAILROAD
BRIDGE







FOOT
BRIDGES CAN
FACILITATE
CONNECTING
TRAIL
SEGMENTS

VIEW N-E AT
FOOT BRIDGE

SOUTH
MOUNTAIN
RESERVATION
LOOMS
ON RIGHT





LOOKING
UPSTREAM
FROM
FOOT BRIDGE

SOCCER FIELD
ON RIGHT

LOOKING DOWNSTREAM

THERE ARE MIDDLE SCHOOL
PLAYING FIELDS ON BOTH
SIDES OF THE WEST BRANCH

IS THERE ROOM FOR A PATH
ON THE OPPOSITE BANK?



THE PAPER MILL PLAYHOUSE IS IN SIGHT



A FOOT BRIDGE
IN THIS AREA
WOULD BE A
REAL ASSET TO
PATRONS
COMING FROM
DOWNTOWN
MILLBURN



Greenway
enters South
Mountain
Reservation at
the Glen
Avenue
bridge



- 
- NOW BACK TO THE END RUN
AROUND THE ENCUMBRANCES
OF DOWNTOWN MILLBURN

START AT DEAD
END ROAD
ACROSS
FROM
LAKESIDE
VILLAGE APTS.

PERHAPS A
FOOT BRIDGE
IS NEEDED



PANNING
RIGHT,
SCOOT
ALONG
SOME QUIET
STREETS

TURN LEFT





THEN
RIGHT



TAYLOR PARK
BEGINS
ACROSS THE
STREET
(UPPER LEFT)



PAST THE POND
AND
COMMUNITY
CENTER

WHITE FOOT
BRIDGE IN
BACKGROUND
IS A
SIGNIFICANT
CHOKER POINT
FOR
FLOODING



ON TO
THE ROSE
GARDEN
IN N-E
CORNER
OF
TAYLOR
PARK



CROSS
MILLBURN AVE.
TO REACH
LACKAWANNA
PLACE

SOUTH MTN.
LOOMS
AHEAD
RIGHT



A SHORT BLOCK ON LACKAWANNA PLACE






CROSS ESSEX
ST. TO GO
UNDER
THE
RAILROAD



BEYOND THE
RAILROAD
BRIDGE, WE
ARE
NEAR THE
RESERVATION

LOCUST
GROVE
ENTRANCE
TO
SO. MTN.
RESERVATION
AT GLEN AVE.

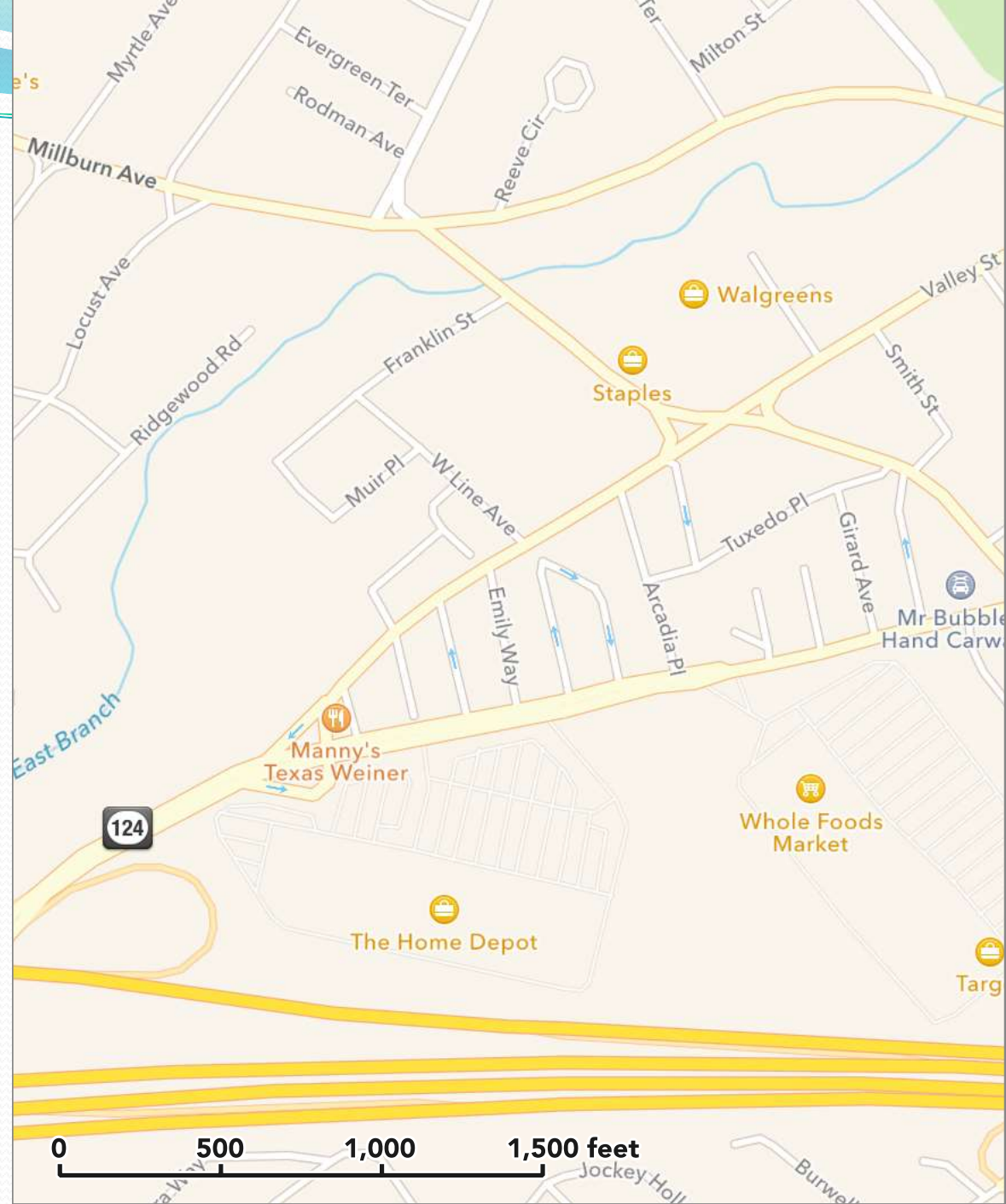


- 
- IS AN *EAST BRANCH* GREENWAY FEASIBLE?
 - IS IT GOOD IDEA?
 - WHICH WAY CAN IT RUN?
 - WHAT IS IN THE WAY?
 - WHERE SHOULD IT END UP?
 - DO WE WANT/NEED BOTH GREENWAYS?

COMMENTS

- WEST BRANCH ROUTE IS HEAVILY ENCUMBERED BY DEVELOPMENT AS IT TRIES TO GET THROUGH MILLBURN
- EAST BRANCH ROUTE HAS LESS SEVERE DEVELOPMENT ISSUES, BUT IS TWICE AS LONG

EAST BRANCH RUNNING
BETWEEN
UNION & MILLBURN
TOWNSHIPS, PAST
VAUXHALL BRIDGE TO
MAPLEWOOD
COUNTRY CLUB



START OF
EAST BRANCH
ROUTE AT THE
RT. 124
OVERPASS

HOW DO YOU PUT
A TRAIL
THROUGH HERE?



SUMMER VIEWS AT THE HIGHWAY



PAN RIGHT TO SHOW
HIGH BERM
PROTECTING THE
HOUSES OF THE
“SOUTH MOUNTAIN”
RESIDENTIAL AREA

IS THERE ROOM FOR
A GREENWAY?



VIEW
UPSTREAM
FROM THE
HIGH
BERM



VIEW
DOWNSTREAM
FROM THE
HIGH BERM



MAPLECREST FORD
OCCUPIES ~100 YDS.
OF THE EAST BANK IN
UNION TOWNSHIP





BELIEVE IT
OR NOT,
THE HOUSES
ARE ON THE
OTHER
SIDE OF THE
RIVER

THE “JOINT MEETING”
SANITARY PIPE CROSSING
AT MARTINE DONOFRIO’S
PARK ON GILBERT PLACE
IN MILLBURN

COULD A PEDESTRIAN
BRIDGE HIDE THIS?






DUE TO
CHANGES IN
RIVER'S
COURSE,
MILLBURN
HAS LAND
ON THE EAST
BANK

MILLBURN
FOREST AREA ON
EAST BANK
OF EAST
BRANCH,
DESIGNATED
AS
“GREEN ACRES”
LAND



- 
- CAN THE PUBLIC RECLAIM THE RIVER BANK AND END ITS INAPPROPRIATE COMMERCIAL USE?
 - CAN THE FLOOD PLAIN BE BROADENED HERE?
 - WILL UNION AND MILLBURN TOWNSHIPS COOPERATE TO INSTALL A GREENWAY?



UGLY STONE AND
CONCRETE
“ARMOR” ON BANK
ACROSS FROM
MILLBURN FOREST
AREA

WALL IS TOO LOW
TO HALT OVERFLOW
FLOODING FROM THE
NARROW CHANNEL

VIEW
DOWNSTREAM
FROM
VAUXHALL
BRIDGE

LEFT BANK IS
PRIVATE LAND,
RIGHT BANK IS
PUBLIC
(MILLBURN
TOWNSHIP)





**VIEW
UPSTREAM AT
VAUXHALL
BRIDGE**

**RIVER HEMMED
IN BY PARKING
LOTS &
COMMERCIAL
BUILDINGS**

THIS OLD
ISLAND LOOKS
PROMISING.

MAYBE SOME
FOOT
BRIDGES ...



VIEW
DOWNSTREAM
FROM WEST END
OF MILLBURN
AVENUE BRIDGE

POSSIBLE ROUTE
ON THE
OPPOSITE
BANK?



AT THE
MILLBURN
AVENUE
BRIDGE,
LOOKING
UPSTREAM
TOWARD GOLF
COURSE





BEHIND O'REILLY'S PUB

MAPLEWOOD COUNTRY CLUB

WOULD THE
CLUB ALLOW
PASSAGE BY
THE
GREENWAY?



Challenges and Opportunities

- Highway crossings at three points
- Riverside residences and businesses
- Multiple municipalities in two counties
- Historic vision of Olmsted's Rahway River Parkway
- Flood mitigation combined with recreation and conservation

Greenway Plans Galore

How to get them off the shelf

- 1990 NJCF + Audubon, “Greenways to the Arthur Kill”
 - Identified wildlife habitats to be preserved
- 2007 Village of South Orange, “East Branch of the Rahway River Master Plan” \$1 M from DOT
- 2009 Bloustein School studio course, “Rahway River Greenway Plan”
- 2012 Maplewood Greenway Taskforce, “Reclaiming the River”

WHICH STAKEHOLDERS ARE KEY TO MOVING THESE PLANS FORWARD?

STAKEHOLDERS

Riverside residents and businesses

Army Corps of Engineers, DEP

Municipal and County

Green Teams

Open Space Committees

Environmental Commissions

Historic Preservation Commission

Scouts, Fishers, Boaters

Hikers, Bicyclists

Others?



discussion





Mission/Vision/Reality

- There is a social/political context in which goals like ours need to be accomplished.
- Academic talking points, like we are engaged in today, are necessary, but something else is needed to achieve the goals: a reality check.
- Especially in light of recent political events, not just in presidential politics, but internationally, in the Arab spring for example, it has become increasingly apparent that the only effective way to make change is by creating a cause, largely through social media.